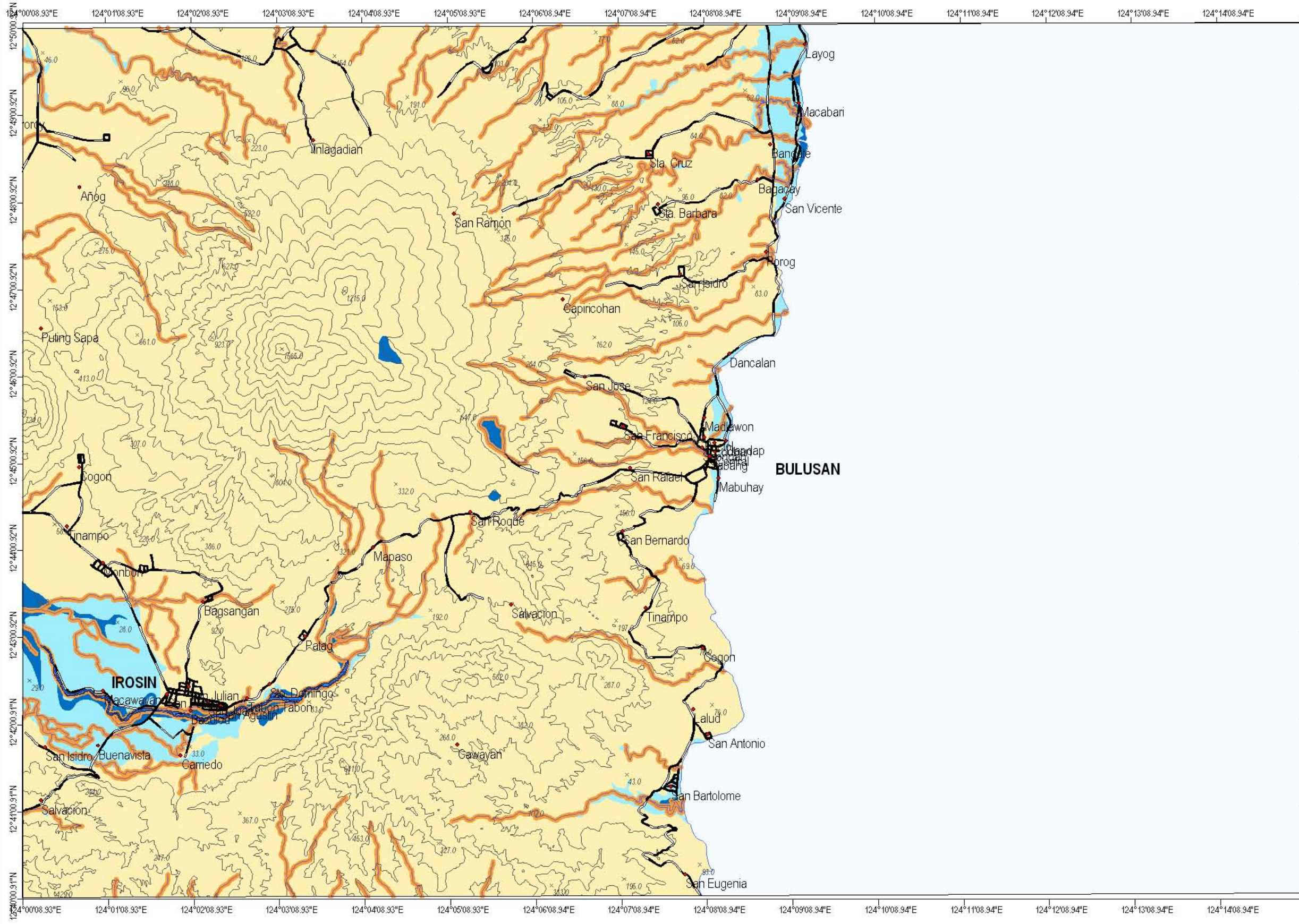


FLOOD HAZARD MAP OF IROSIN QUADRANGLE



MAP LEGEND:

Flood Hazard Zones:

- Non Flood Prone Areas
- Occasionally to Rarely Flooded Areas
- Regularly to Frequently Flooded Areas
- Areas Prone to Riverbank Erosion

— river
— road
— contour

EXPLANATIONS:

Flood hazard susceptibility zones were derived based on the geomorphological analysis of landforms and the fluvial system. Information on flood occurrences, flood depths, duration of inundation as well as topographic information supported the geomorphologically-based flood hazard mapping

Regularly to Frequently Flooded Areas:
Areas that are frequently flooded. Mere heavy rains of 1 to 2 days could bring about flooding in these areas. Moderate to strong typhoons could submerge these areas 0.5 to 2.0 m. in flood waters for a few days to a few weeks. Development of urban settlements in these areas is not recommended.

Occasionally to Rarely Flooded Areas:
Areas that become inundated during moderate to strong typhoons. Flood depths vary from a few centimeters to 1 m. Floods last from a few hours to a few days

Non Flood Prone Areas:
Areas with no reported flood occurrences

Areas Prone to Riverbank Erosion:
Areas 0 to 50 m. from river banks that are prone to scouring and erosion.

Field data collection by: A. E. Dayao
 Geomorphological interpretation by: A.E. Dayao
 Digital cartographic processing by: A.E. Dayao
 GIS processing by: A.E. Dayao
 Checked by: R.A. Juan
 Approved by: R.A. Juan

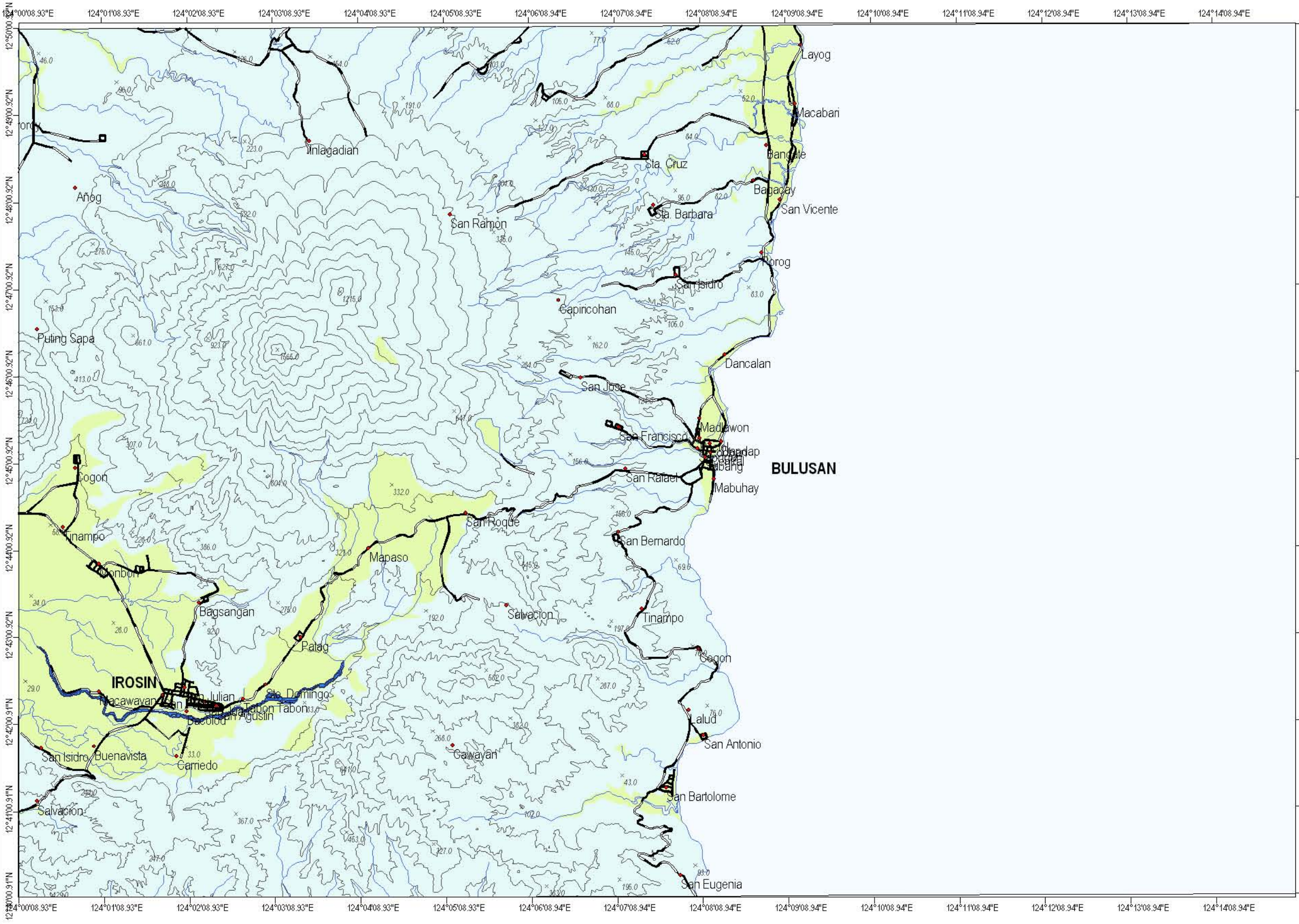
Other sources of Information:
 1:50,000 NAMRIA Topographic Map
 1951 B/W Aerial photos
 1988 B/W Aerial photos
 1993 B/W Aerial photos



Published by:
 Department of Environment and Natural Resources
 MINES AND GEOSCIENCES BUREAU-RO5
 Daraga, Albay
 2008



GROUND SETTLEMENT AND GROUND SUBSIDENCE SUSCEPTIBILITY MAP OF IROSIN QUADRANGLE



MAP LEGEND: Ground Settlement and Ground Subsidence Susceptibility Zones:

- Areas susceptible to ground settlement
- Areas not susceptible to ground settlement/subsidence
- river
- road
- contour

EXPLANATIONS:
Susceptibility map for ground subsidence due to karst or solution processes was primarily derived from the lithologic map of the study area. Field observations on sinkholes and ground subsidence observed on concrete roads and damaged houses supported the mapping. Areas of possible ground settlement were delineated through the analysis of the geomorphological lay of the study area, the sub-surface soils and the ground water levels.

Areas Susceptible to Ground Subsidence:
Areas that are prone to ground cavitation, sinkhole formation and ground subsidence in areas underlain by limestone and calcareous siltstones and shales.

Areas Susceptible to Ground Settlement:
Areas where fluvialite sands, silts and clays coupled with shallow ground water table are sites of possible ground settlement. Ground settlement may be reduced through appropriate foundation design. Buildings having 3 storeys or more should be tested for settlement and/or consolidation. Buildings having 5 storeys or more should undergo detailed geotechnical studies.

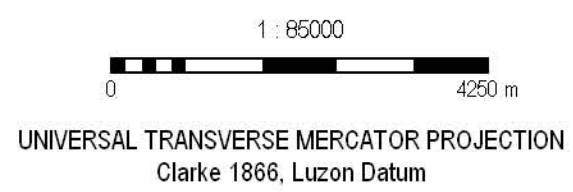
Areas not Susceptible to Ground Settlement or Ground Subsidence:
Areas where the possibility of ground settlement or ground subsidence is low or absent.

Field data collection by: A. E. Dayao
Geomorphological interpretation by: A. E. Dayao
Digital cartographic processing by: A. E. Dayao
GIS processing by: A. E. Dayao
Checked by: R. A. Juan
Approved by: R. A. Juan

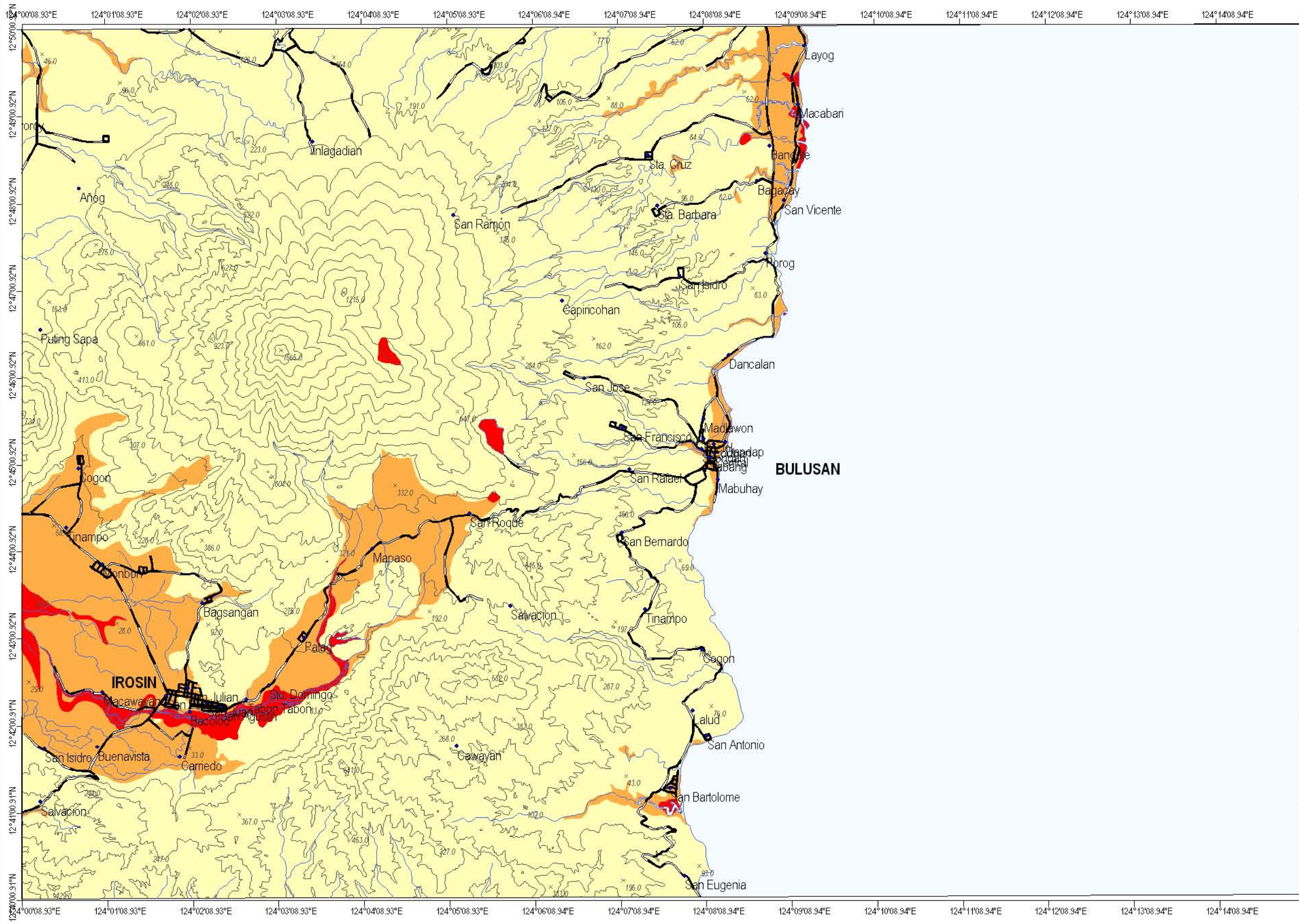
Other sources of Information:
1:50,000 NAMRIA Topographic Map
1951 B/W Aerial photos
1988 B/W Aerial photos
1993 B/W Aerial photos



Published by:
Department of Environment and Natural Resources
MINES AND GEOSCIENCES BUREAU-RO5
Daraga, Albay
2008



LIQUEFACTION POTENTIAL MAP OF IROSIN QUADRANGLE



MAP LEGEND:

Liquefaction Potential Zones:

- Areas where liquefaction is likely
- Areas where liquefaction is not likely
- Areas where liquefaction is possible

— river
— road
— contour

EXPLANATIONS:

There are no reported liquefaction occurrences in the mapped area based on several field interviews. However, zones of different liquefaction potential were derived based on the geomorphological analysis of the study area following previous studies made by Iwasaki and Yasuda.

Areas where Liquefaction is Likely:
Areas where liquefaction is likely include river beds, river terraces, abandoned river channels and meanders, channel bars, lakes and lake margins, active tidal flats with mangroves, backswamps and fluvial basins. These areas are unsuitable for urban development. Multi-storey buildings should be required of geotechnical studies addressing or mitigating the effects of liquefaction.

Areas where Liquefaction is Possible:
The floodplain of the Cadacan River and its fluvial levees and point bars, the accumulative footslopes, the coastal plains and the beach ridges are areas where liquefaction is possible. Buildings having 5 storeys or more should be required a full geotechnical study.

Areas where Liquefaction is not Likely:
Areas where the likelihood of liquefaction is unlikely.

Field data collection by: A. E. Dayao
 Geomorphological interpretation by: A.E. Dayao
 Digital cartographic processing by: A.E. Dayao
 GIS processing by: A.E. Dayao
 Checked by: R.A. Juan
 Approved by: R.A. Juan

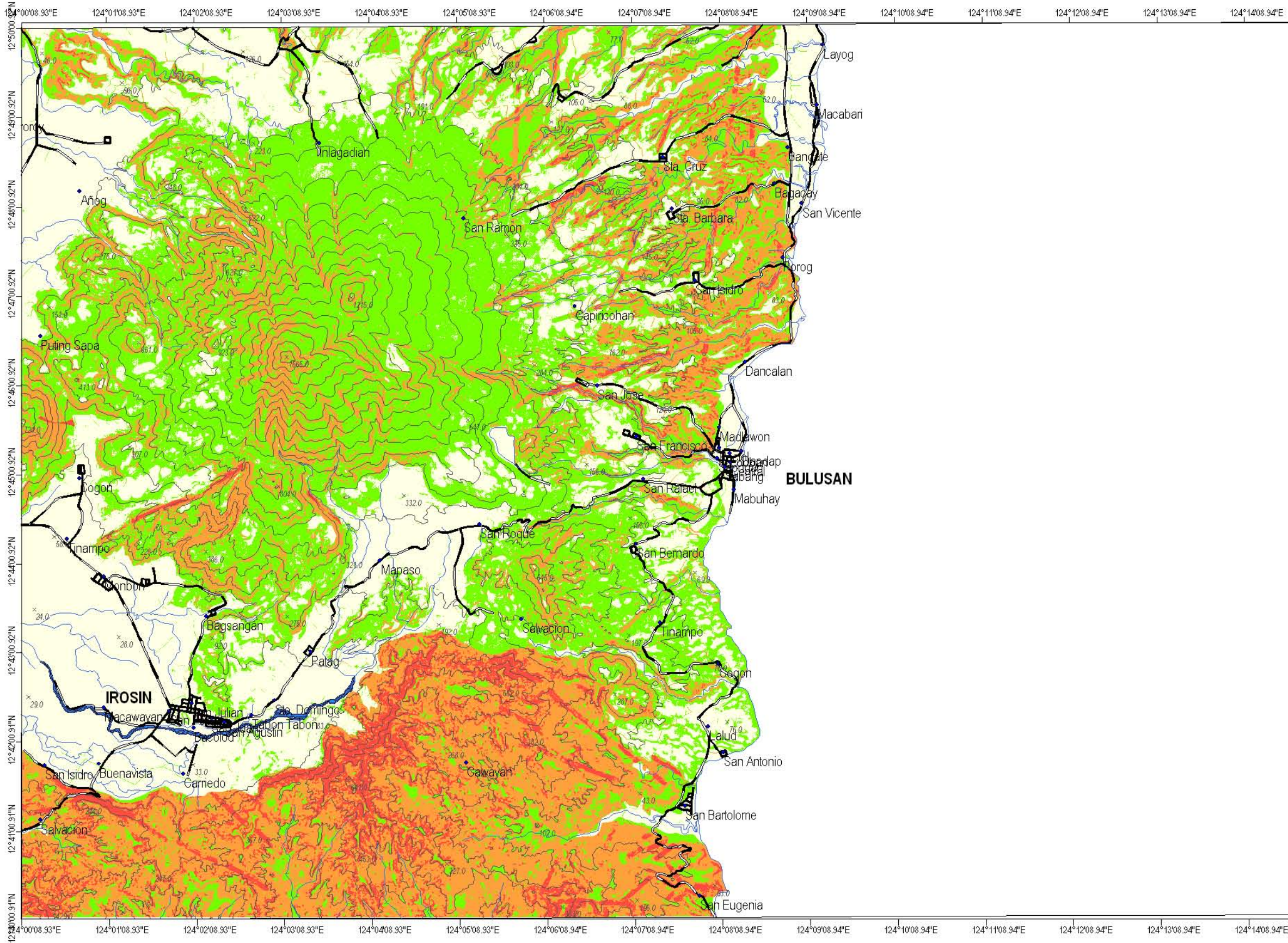
Other sources of Information:
 1:50,000 NAMRIA Topographic Map
 1951 B/W Aerial photos
 1988 B/W Aerial photos
 1993 B/W Aerial photos



Published by:
 Department of Environment and Natural Resources
 MINES AND GEOSCIENCES BUREAU-R05
 Daraga, Albay
 2008



LANDSLIDE SUSCEPTIBILITY MAP OF IROSIN QUADRANGLE



MAP LEGEND:

Landslide Susceptibility

- Absent
- Low Susceptibility to Absent
- Moderate Susceptibility
- High Susceptibility
- river
- road
- contour

EXPLANATIONS:

Landslide hazard susceptibility zones were derived through qualitative map combination using lithology, geomorphology, slope gradient, proximity to roadcuts and fault distance. GIS was used in the map combination and subjective weights were assigned to each unit in the parameter map.

Areas with High Susceptibility to Landslides:
Areas with high probability of occurrence of mass movements particularly rock and debris slides, slumps and debris flows. The crater walls, the volcanic ravines and gullies of Mt. Bulusan, areas traversed by faults and the very steep to nearly vertical slopes underlain by Tabontabon Volcanics are rated high susceptibility areas and are unsuitable for housing development and human settlement.

Areas with Moderate Susceptibility to Landslides:
Areas having moderate likelihood of occurrence of landslides and are recommended for more detailed engineering geological and geohazard assessment prior to housing development.

Areas with Absent or Low Susceptibility to Landslides:
Areas where the likelihood of landslide occurrence is either absent or low.

Field data collection by: A. E. Dayao
Geomorphological interpretation by: A.E. Dayao
Digital cartographic processing by: A.E. Dayao
GIS processing by: A.E. Dayao
Checked by: R.A. Juan
Approved by: R.A. Juan

Other sources of Information:
1:50,000 NAMRIA Topographic Map
1951 B/W Aerial photos
1988 B/W Aerial photos
1993 B/W Aerial photos



Published by:
Department of Environment and Natural Resources
MINES AND GEOSCIENCES BUREAU-R05
Daraga, Albay
2008



UNIVERSAL TRANSVERSE MERCATOR PROJECTION
Clarke 1866, Luzon Datum

