

# FLOOD HAZARD MAP OF PANGANIRAN QUADRANGLE



**MAP LEGEND:**  
**Flood Hazard Zones:**

- Non Flood Prone Areas
- Occasionally to Rarely Flooded Areas
- Regularly to Frequently Flooded Areas
- Areas Prone to Bank Erosion
- river
- road

**EXPLANATIONS:**

Flood hazard susceptibility zones were derived based on the geomorphological analysis of landforms and the fluvial system. Information on flood occurrences, flood depths, duration of inundation as well as topographic information supported the geomorphologically-based flood hazard mapping.

**Regularly to Frequently Flooded Areas:**  
 Areas that are frequently flooded. Mere heavy rains of 1 to 2 days could bring about flooding in these areas. Moderate to strong typhoons could submerge these areas 0.5 to 3.0 m. in flood waters for a few days to a few weeks. Housing development in these areas is not recommended.

**Occasionally to Rarely Flooded Areas:**  
 Areas that become inundated during moderate to strong typhoons. Flood depths vary from a few centimeters to 1 m. Floods last from a few hours to a few days.

**Non Flood Prone Areas:**  
 Areas with no reported flood occurrences except along low lying areas adjoining rivers or creeks.

**Areas Prone to Riverbank Erosion:**  
 Areas 0 to 50 m. from river banks that are prone to scouring and erosion.

Field data collection by: E.L.Laguerta & D.D. Velante  
 Geomorphological interpretation by: A.E.Dayao & E.L.laguerta  
 Digital cartographic processing by: A.E.Dayao & E.L.laguerta  
 GIS processing by: A.E.Dayao & E.L.laguerta  
 Checked by: A.E.Dayao  
 Approved by: R.A.Juan

Other sources of Information:  
 1:50,000 NAMRIA Topographic Map  
 1951 B/W Aerial photos  
 1988 B/W Aerial photos

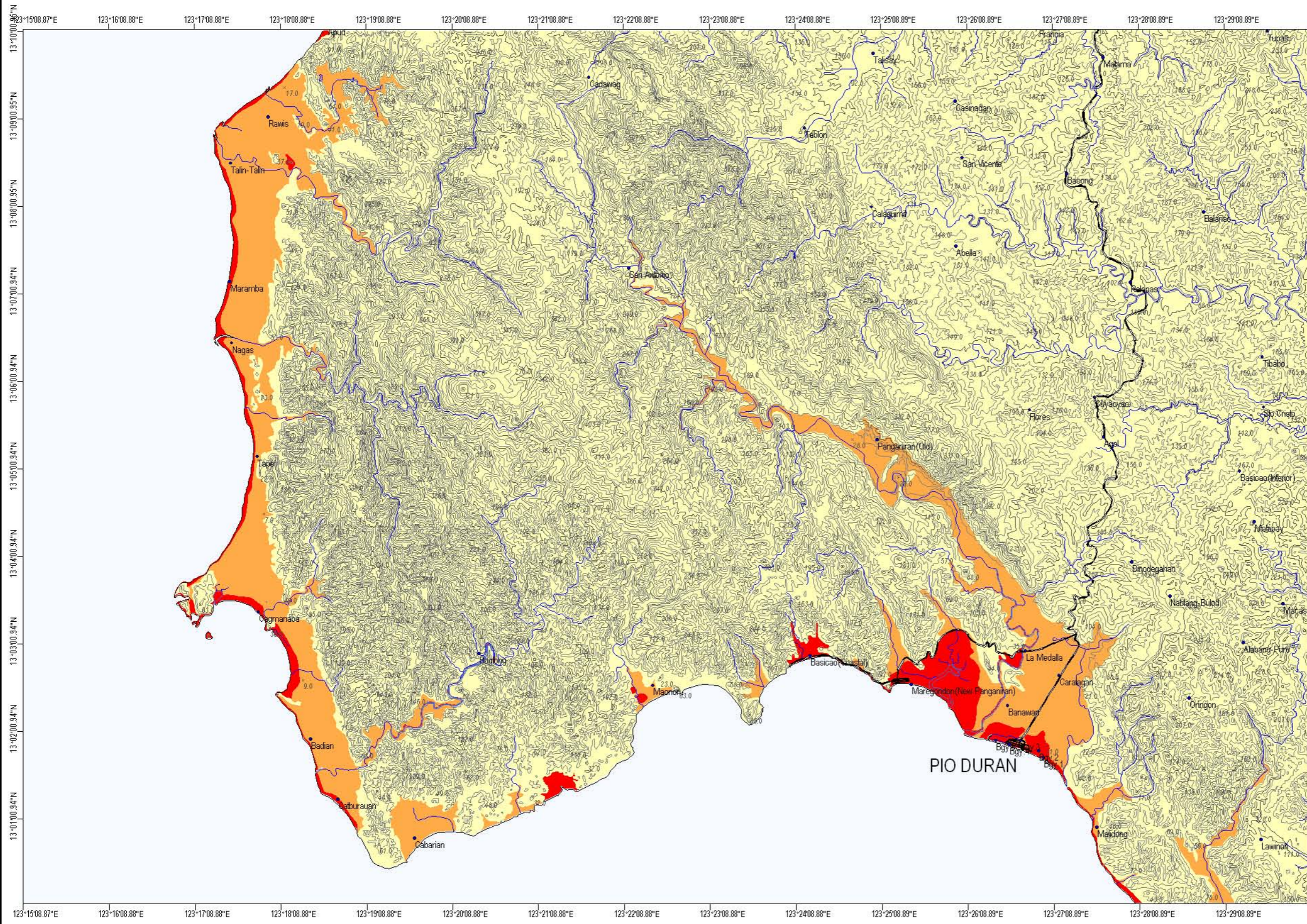
Published by  
 Department of Environment and Natural Resources  
 MINES AND GEOSCIENCES BUREAU-RO5  
 Daraga, Albay  
 2007



UNIVERSAL TRANSVERSE MERCATOR PROJECTION  
 Clarke 1866, Luzon Datum



# LIQUEFACTION POTENTIAL MAP OF PANGANIRAN QUADRANGLE



**MAP LEGEND:**  
**Liquefaction Potential Zones:**

- Areas where liquefaction is likely
- Areas where liquefaction is not likely
- Areas where liquefaction is possible
- river
- road

**EXPLANATIONS:**

There are no reported liquefaction occurrences in the study area based on several interviews. However, zones of different liquefaction potential were derived based on the geomorphological analysis of the study area following criteria previously made by Iwasaki and Yasuda.

**Areas where Liquefaction is Likely:**  
 Areas where liquefaction is likely are confined within the riverbed of Panganiran River, the beach, spit, beach ridge and swale complex and the swamps along the coastal areas. These areas are unsuitable for community and urban settlement.

**Areas where Liquefaction is Possible:**  
 The likelihood of occurrence of liquefaction is less for these areas.

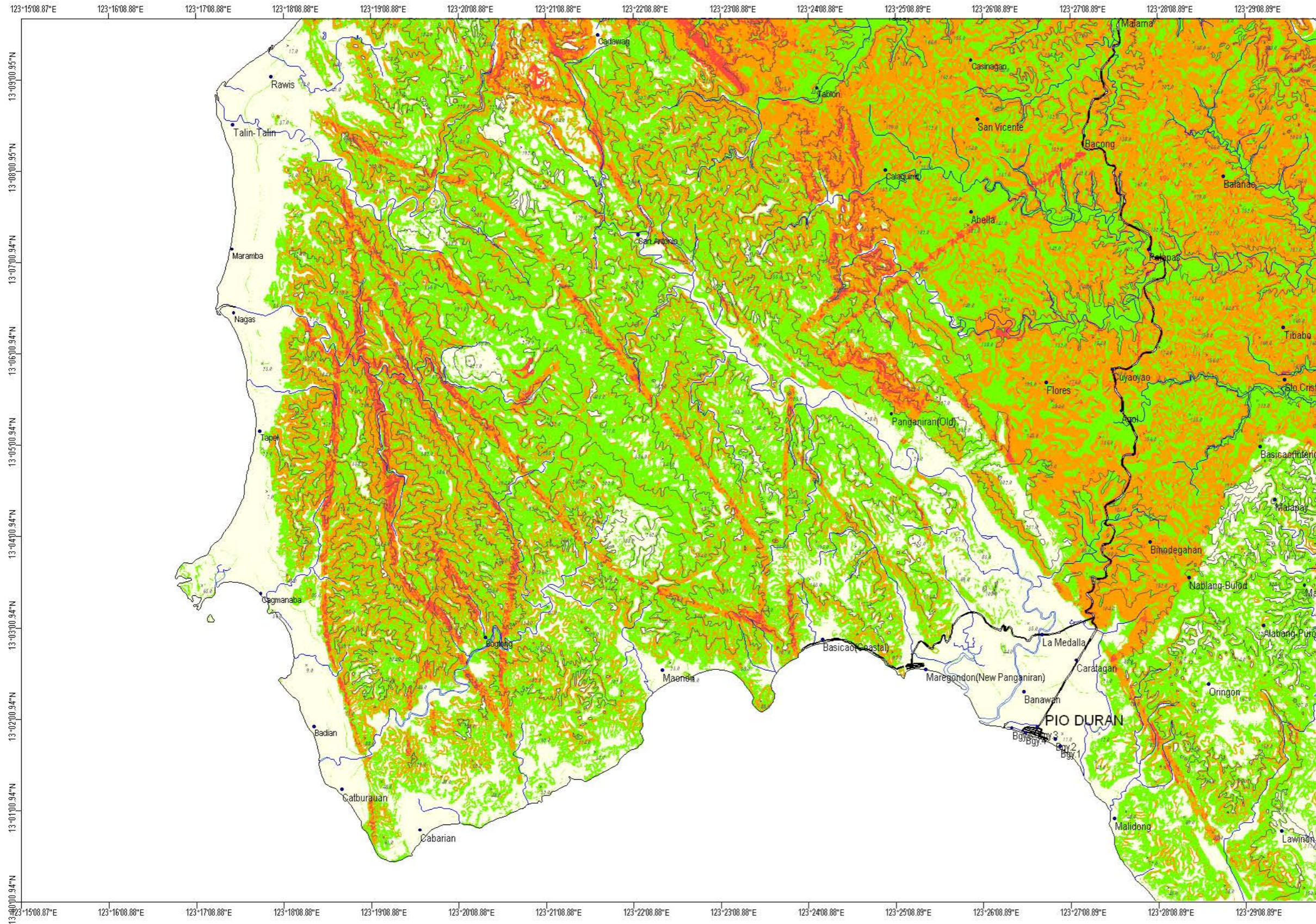
**Areas where Liquefaction is not Likely:**  
 Areas where the likelihood of liquefaction is unlikely. Most parts of the Panganiran Quadrangle Map sheet are not prone to liquefaction because of the underlying bedrocks.

Field data collection by: E.L.Laguerta & D.D. Velante  
 Geomorphological interpretation by: A.E.Dayao & E.L.laguerta  
 Digital cartographic processing by: A.E.Dayao & E.L.laguerta  
 GIS processing by: A.E.Dayao & E.L.laguerta  
 Checked by: A.E.Dayao  
 Approved by: R.A.Juan

Other sources of Information:  
 1:50,000 NAMRIA Topographic Map  
 1951 B/W Aerial photos  
 1988 B/W Aerial photos



# LANDSLIDE SUSCEPTIBILITY MAP OF PANGANIRAN QUADRANGLE



**MAP LEGEND:**

**Landslide Susceptibility Zones:**

- Absent
- Low susceptibility
- Moderate susceptibility
- High susceptibility

fault  
 river  
 road

**EXPLANATIONS:**

Landslide hazard susceptibility zones were derived through qualitative map combination using lithology, geomorphology, slope gradient, road distance and fault distance. GIS was used in the map combination and subjective weights were assigned to each unit in the parameter map.

**Areas with High Susceptibility to Landslides:**  
 Areas with equally high probability of occurrence of mass movements particularly rock slides, debris slides and slumps. Very steep to nearly vertical slopes and areas along fault lines are rated high susceptibility areas and are unsuitable for housing development.

**Areas with Moderate Susceptibility to Landslides:**  
 Areas having moderate likelihood of occurrence of landslides and are recommended for more detailed engineering geological and geohazard assessment prior to housing development.

**Areas with Absent or Low Susceptibility to Landslides:**  
 Areas where the likelihood of landslide occurrence is either absent or low.

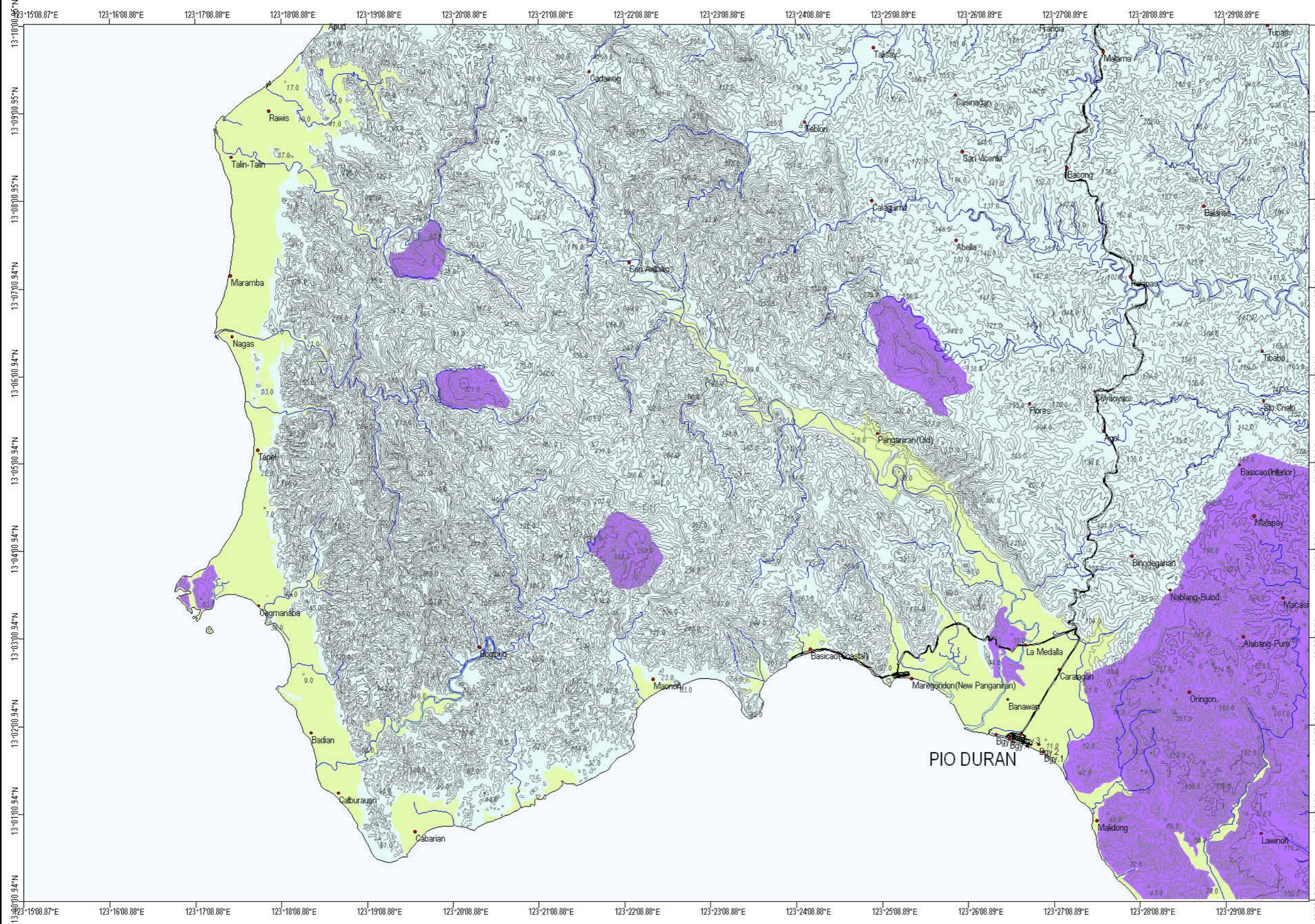
Field data collection by: E.L. Laguerta & D.D. Velante  
 Geomorphologic interpretation by: A.E. Dayao & E.L. Laguerta  
 Digital cartographic processing by: A.E. Dayao & E.L. Laguerta  
 GIS processing by: A.E. Dayao & E.L. Laguerta  
 Checked by: A.E. Dayao  
 Approved by: R.A. Juan

Other sources of Information:  
 1:50,000 NAMRIA Topographic Map  
 1951 B/W Aerial photos  
 1988 B/W Aerial photos

Published by:  
 Department of Environment and Natural Resources  
 MINES AND GEOSCIENCES BUREAU-RO5  
 Daraga, Albay  
 2007



# GROUND SUBSIDENCE AND GROUND SETTLEMENT SUSCEPTIBILITY MAP OF PANGANIRAN QUADRANGLE



**MAP LEGEND:**  
**Ground Subsidence and Ground Settlement Susceptibility Zones:**

- Areas Susceptible to Ground Settlement
- Areas Susceptible to Ground Subsidence
- Areas not Susceptible to Ground Settlement/Subsidence
- river
- road

**EXPLANATIONS:**

Susceptibility map for ground subsidence due to karst or solution processes was primarily derived from the lithologic map of the study area. Field observations on sinkholes, ground subsidence observed on concrete roads and damaged houses supported the mapping. Areas of possible ground settlement were delineated through the analysis of the geomorphological lay of the study area, the sub-surface soils and the groundwater levels.

**Areas Susceptible to Ground Subsidence:**  
 Areas that are prone to ground cavitation, sinkhole formation and ground subsidence in areas underlain by limestone, marl and calcareous siltstones and shales.

**Areas Susceptible to Ground Settlement**  
 Areas where fluvial and marine sands, silts and clays coupled with shallow groundwater table are sites of possible ground settlement. Ground settlement may be reduced through appropriate foundation design. Buildings having 3 storeys or more should be tested for settlement and/or consolidation. Buildings having 5 storeys or more should undergo detailed geotechnical studies.

**Areas not Susceptible to Ground Settlement or Ground Subsidence:**  
 Areas where the possibility of ground settlement or ground subsidence is low or absent

Field data collection by: E.L.Laguerta & D.D. Velante  
 Geomorphological interpretation by: A.E.Dayao & E.L.laguerta  
 Digital cartographic processing by: A.E.Dayao & E.L.laguerta  
 GIS processing by: A.E.Dayao & E.L.laguerta  
 Checked by: A.E.Dayao  
 Approved by: R.A.Juan

Other sources of Information:  
 1:50,000 NAMRIA Topographic Map  
 1951 B/W Aerial photos  
 1988 B/W Aerial photos

